

2027 High School Bass 1 and Bass 2

The audition consists of performing an unaccompanied scale and an excerpt from an Italian aria.

- **Scale**
 - Must be unaccompanied, in key corresponding with student's voice type.
 - Singers may use numbers, solfège, or neutral syllables. Humming is not permitted. Tonic chord and starting pitch are permitted at the start of the recorded audition file. Please note you **MUST** start on the correct designated pitch or else the score is automatically a zero for the scales.
- **Alma de Coré**
 - Must be unaccompanied. Tonic chord and starting pitch are permitted at the start of the recorded audition file. Please note you **MUST** start on the correct designated pitch or else the score is automatically a zero for the Alma. A pronunciation guide is provided at the end of the audition material.

Bass I
Option 2



Alma del core (excerpt)

Antonio Caldara

Bass 1



7 Al-ma del co - re, Spir-to_ dell' al - ma! Sem-pre co - stan - te_

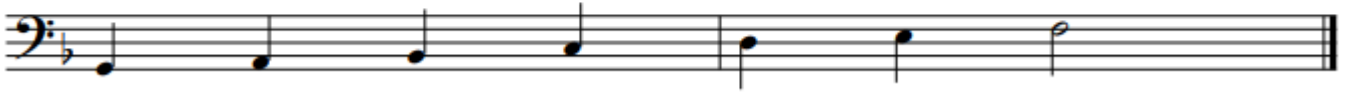
13 t'a - do - re - rò. T'a - do - re - rò, t'a - - do - re - rò.

19 T'a - do - re - rò t'a - - do - re - rò. Sa - rò con - ten - to

25 Nel mio tor - men - to Se quel bel lab - bro_ ba - ciar_ po - trò.

Se quel bel lab - bro, se quel bel lab - bro_ ba - ciar_ po - trò.

Bass II
Option 1



Bass 2



7

Al-ma del co - re, Spir-to_ dell' al - ma! Sem-pre co - stan - te_



13

t'a - do - re - rò. T'a - do - re - rò, t'a - - do - re - rò.



19

T'a - do - re - rò t'a - - do - re - rò. Sa - rò con - ten - to



25

Nel mio tor - men - to Se quel bel lab - bro_ ba - ciar_ po - trò.



Se quel bel lab - bro, se quel bel lab - bro_ ba - ciar_ po - trò.

Pronunciation Guide for "Alma del core"

Below is a syllable-by-syllable pronunciation guide for the main excerpt, using the breakdown from the sheet music and standard Italian pronunciation rules. Each syllable is matched to its Italian sound, with English approximations where helpful.

Italian Text (Syllabic Breakdown):

- Al-ma del co-re
- Spir-to dell' al-ma!
- Sem-pre co-stan-te
- t'a-do-re-rò
- Sa-rò con-ten-to
- Nel mio tor-men-to
- Se quel bel lab-bro ba-ciar po-trò

Pronunciation Guide (English Approximation):

- **Al-ma del co-re:** AHL-mah del KOH-reh
- **Spir-to dell' al-ma!:** SPEER-toh dell AHL-mah
- **Sem-pre co-stan-te:** SEM-preh koh-STAHN-teh
- **t'a-do-re-rò:** tah-doh-reh-ROH
- **Sa-rò con-ten-to:** sah-ROH kon-TEN-toh
- **Nel mio tor-men-to:** nel MEE-oh tor-MEN-toh
- **Se quel bel lab-bro ba-ciar po-trò:** seh kwel bel LAHB-broh bah-CHAR poh-TROH

Tips for Italian Pronunciation:

- All vowels are pure: 'a' as in 'father', 'e' as in 'bet', 'i' as in 'machine', 'o' as in 'open', 'u' as in 'food'.
- 'r' is rolled or flipped.
- 'c' before 'i' or 'e' is pronounced 'ch' as in 'church'.
- Double consonants (like 'll', 'bb', 'tt') are held slightly longer.
- Syllables are evenly stressed unless otherwise marked.

Example Implementation: When practicing, break down each phrase by syllable as shown above, and repeat each slowly, focusing on vowel purity and consonant clarity. For instance, "Al-ma del co-re" should be sung as "AHL-mah del KOH-reh," with a clear rolled 'r' in "core."

This guide is based on the syllabic breakdown provided in the sheet music and standard Italian pronunciation rules.